

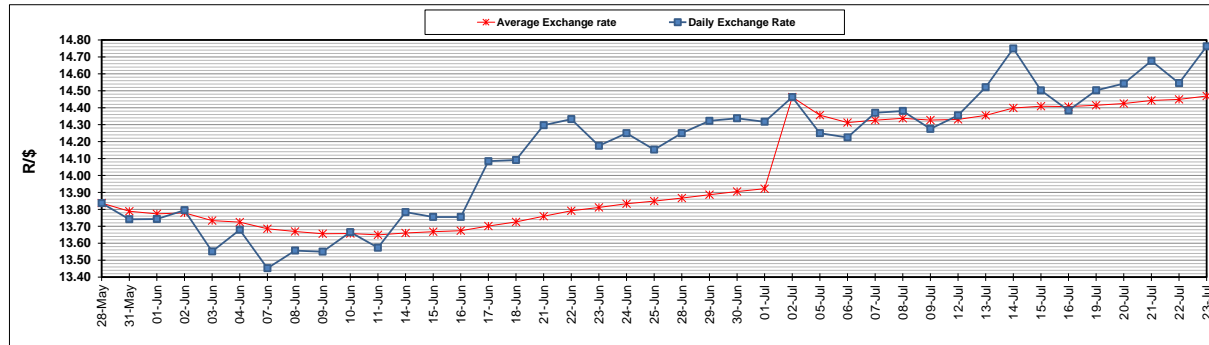
	PETROL 95 ULP	PETROL 93 ULP & LRP	DIESEL 0.05%	DIESEL 0.005%	ILL. PAR.
GAUTENG PUMP PRICE (SA c/l) AS FROM 07/07/2021	1,739.000	1,720.000	-	-	-
WHOLESALE PRICE (SA c/l) AS FROM 07/07/2021	-	-	1,508.620	1,512.020	913.488
SINGLE NATIONAL MAXIMUM RETAIL PRICE	-	-	-	-	1,150.000
BASIC FUEL PRICE - 23/07/2021 (SA c/l)	834.219	819.205	775.589	778.446	756.291
PRESS RELEASE CONTRIBUTION TO BFP 07/07/2021 - 23/07/2021 (SA c/l)	743.170	734.170	721.630	725.030	700.128
UNIT OVER/(UNDER) RECOVERY - 23/07/2021 (SA c/l)	(91.049)	(85.035)	(53.959)	(53.416)	(56.163)
AVERAGE BASIC FUEL PRICE 02/07/2021 - 23/07/2021	815.400	801.983	759.052	761.812	738.596
AVERAGE UNIT OVER/(UNDER) RECOVERY 02/07/2021 - 23/07/2021	(77.105)	(73.251)	(45.297)	(44.470)	(45.218)

ANALYSIS MOVEMENT OF AVERAGE OVER/(UNDER) RECOVERY

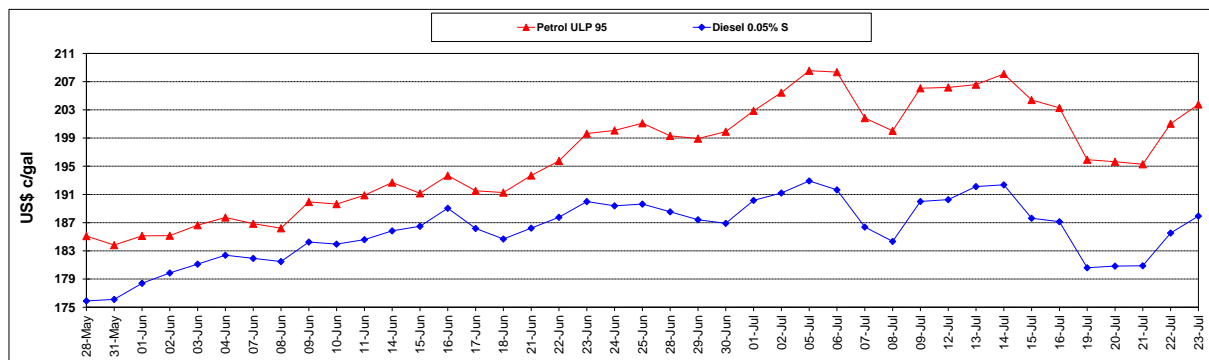
	PETROL 95	PETROL 93	DIESEL 0.05%	DIESEL 0.005%	ILL. PAR.
- MOVEMENT IN INTERNATIONAL PRODUCT PRICES	(46.273)	(42.926)	(16.596)	(15.663)	(17.290)
- MOVEMENT IN EXCHANGE RATE	(30.832)	(30.324)	(28.701)	(28.806)	(27.928)
AVERAGE UNIT OVER/(UNDER) RECOVERY 02/07/2021 - 23/07/2021	(77.105)	(73.251)	(45.297)	(44.470)	(45.218)

R/\$ EXCHANGE RATE - (R/\$14.7625- 23/07/2021)

EXCHANGE RATE USED IN BASIC FUEL PRICE



INTERNATIONAL PRODUCT PRICES OF BASKET USED IN BASIC FUEL PRICE



BASIC FUEL PRICE IN SA CENTS PER LITRE

